



OUR MISSION

The Robert Koch Institute is Germany's national public health institute and one of the world-leading agencies of its kind. We protect the public from current health risks and prepare ourselves for future challenges. Our work is based on excellent, evidence-based science.

The RKI achieves its mission through:

Monitoring, surveillance and prediction of health risks by collecting, analyzing and processing reliable data and information.

Research on the causes, extent and mitigation or reduction of the burden of disease.

Advising the German government, key stakeholders in the health care sector and the scientific community.

Emergency preparedness and response to disease outbreaks and bioterrorism through national coordination and international networks.

To this end, the RKI will continue to develop and maintain the necessary scientific competencies to respond appropriately to health threats and to recognize and mitigate new emerging risks.

OUR VALUES

We promote research and evidence.

We operate within an interdisciplinary network.

We share our knowledge.

We take responsibility on a global level.

Our work is independent and transparent.

The world is changing – and in it we change.

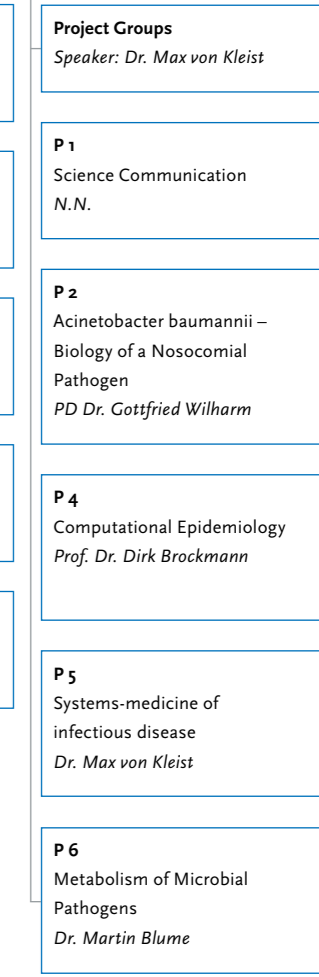
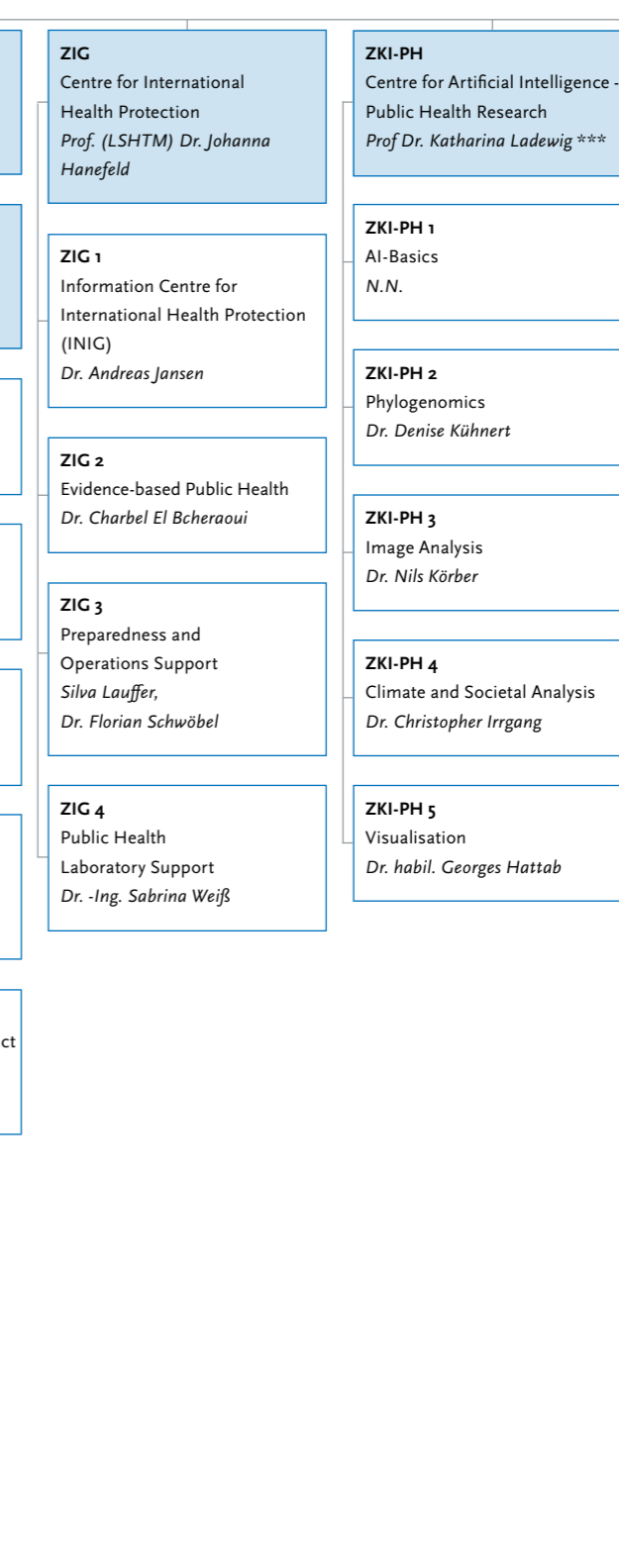
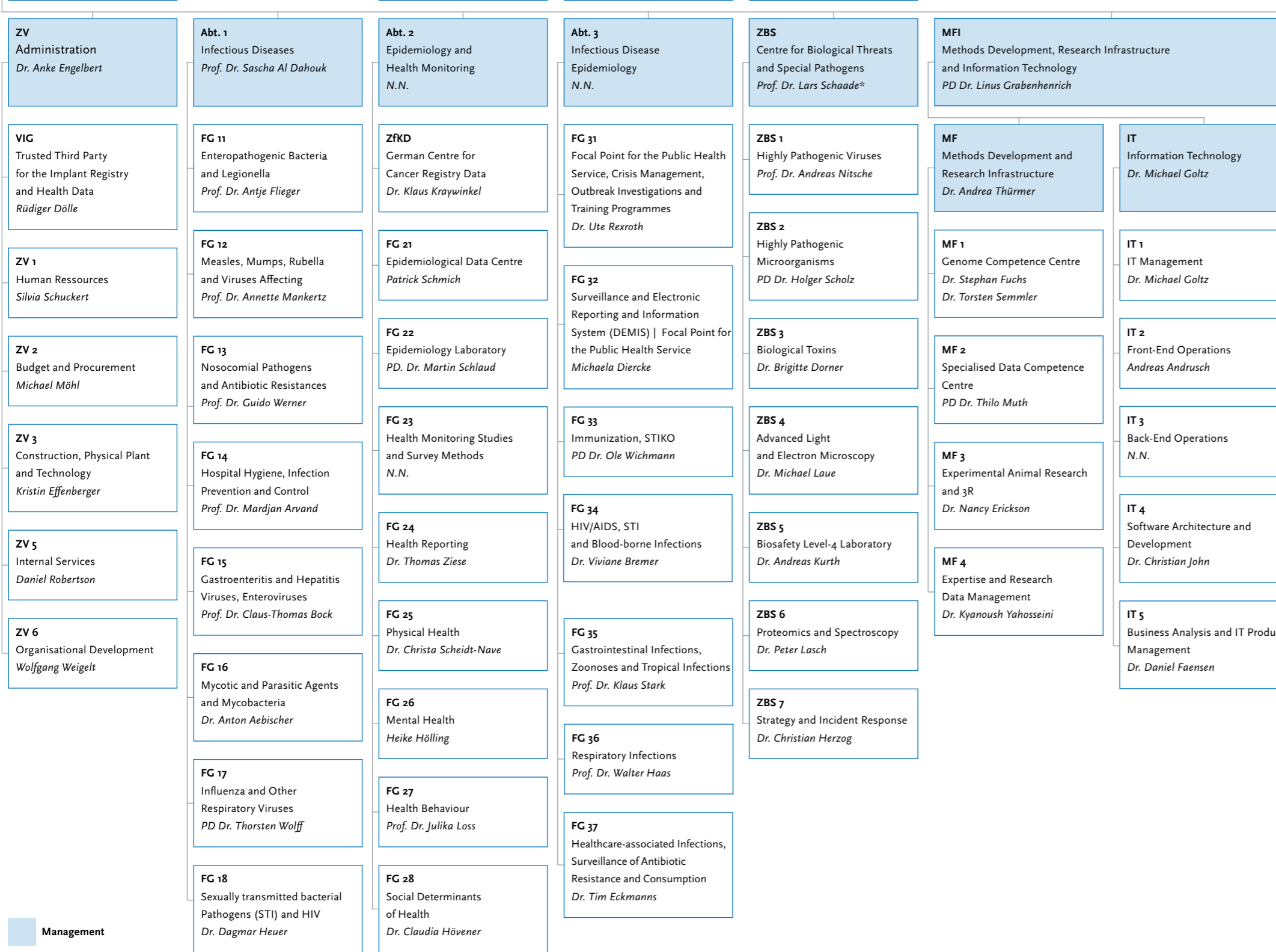
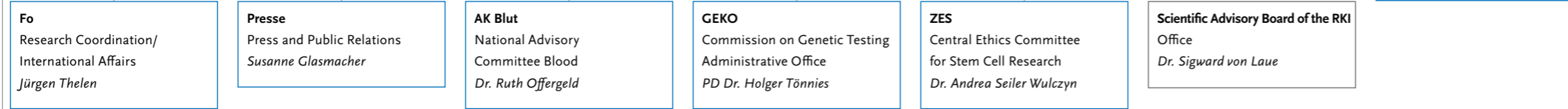


PROMOTING RESEARCH AND EVIDENCE

SHARING KNOWLEDGE

PROTECTING AND IMPROVING HEALTH

Organisation Chart of the Robert Koch Institute



Management

* Chief Export Control Officer
 ** Additional duty to head of department function
 *** In charge – temporarily charged with the conduct of affairs



CENTRAL COMMITTEES AND ROLES

BASA - Commissioner for the Committee of Occupational Safety
Kristin Effenberger

BDURC - Officer for Dual Use Research of Concern
Dr. Iris Hunger

BfdH - Budget Officer
Dr. Anke Engelbert

BfE - Export Control Officer*
Kathrin Baumann

BMPS - Medical Devices Safety Officer
Dr. Janine Kleymann-Hilmes

BNP - Officer for the Nagoya-Protocol
Dr. Peter Löser

BSB - Fire Prevention Officers
Sascha Klatt, Heiko Kühne, Eiko Weiher

DokA - Contact Person for PhD Students
N.N

DSB - Data Protection Officer*
Claudia Enge

FR - Research Council
Jürgen Thelen

GewSB - Water Protection Officer
Gerd Tielke

GGB - Dangerous Goods Safety Officer
Lutz Mönkhoff

GleiB - Equal Opportunity Commissioner
Dr. Simone Jung

GSB - Security Officer
Dr. Min-Hi Lee (deputy)

GWP - Ombudsperson for ensuring good scientific practice
Dr. Franziska Prütz

InklB - Inclusion Commissioner
Björn Kersten

ISB - Information Protection Officer*
Ivaylo Bodurski

JAV - Youth and Trainee Representative Council
Jasmin Herbst, Jannis von Au

KPräv - Contact Person for Prevention of Corruption
Michael Thamm

LSB - Laser Protection Officer
Silvio Bürge

ODB - Open Data-Officer
PD Dr. Linus Grabenhenrich

OHCC - One Health / Climate Change*
N. N.

PersR - Staff Council
Uwe Schäfer

QMB - Quality Management Officer*
Dr. Janine Kleymann-Hilmes

S - Occupational Safety Specialist*
Kristina Mätzke

SBV - Representative for Employees with Disabilities
Andreas Bergholz

SozB - Social Counselling
Yvonne Janczak

StrSB - Radiation Protection Officer
Dr. Sabine Santibanez

TierSchB - Animal Welfare Officers
Dr. Nancy Erickson

VPB - Award Review Officer
Bettina Hanke

WebB - Internet Officer
Ronja Wenchel

** reports directly to the top management
Status: April 2024*

CONTACT

Robert Koch-Institut
Nordufer 20
13353 Berlin

E-Mail: zentrale@rki.de
Tel.: +49 30 18754 0
Fax: +49 30 18754 2328
IVBB: 754 0
www.rki.de

ADDRESSES

Robert Koch-Institut
Nordufer 20
13353 Berlin

Robert Koch-Institut
Seestraße 10
13353 Berlin

Robert Koch-Institut
General-Pape-Straße 62-66
12101 Berlin

Robert Koch-Institut
Ludwig-Witthöft-Straße 14
15745 Wildau

Robert Koch-Institut
Burgstraße 37
38855 Wernigerode

RKI MUSEUM

The Public Health-Visitor Centre
Museum Management: *Dr. Benjamin Kuntz*

